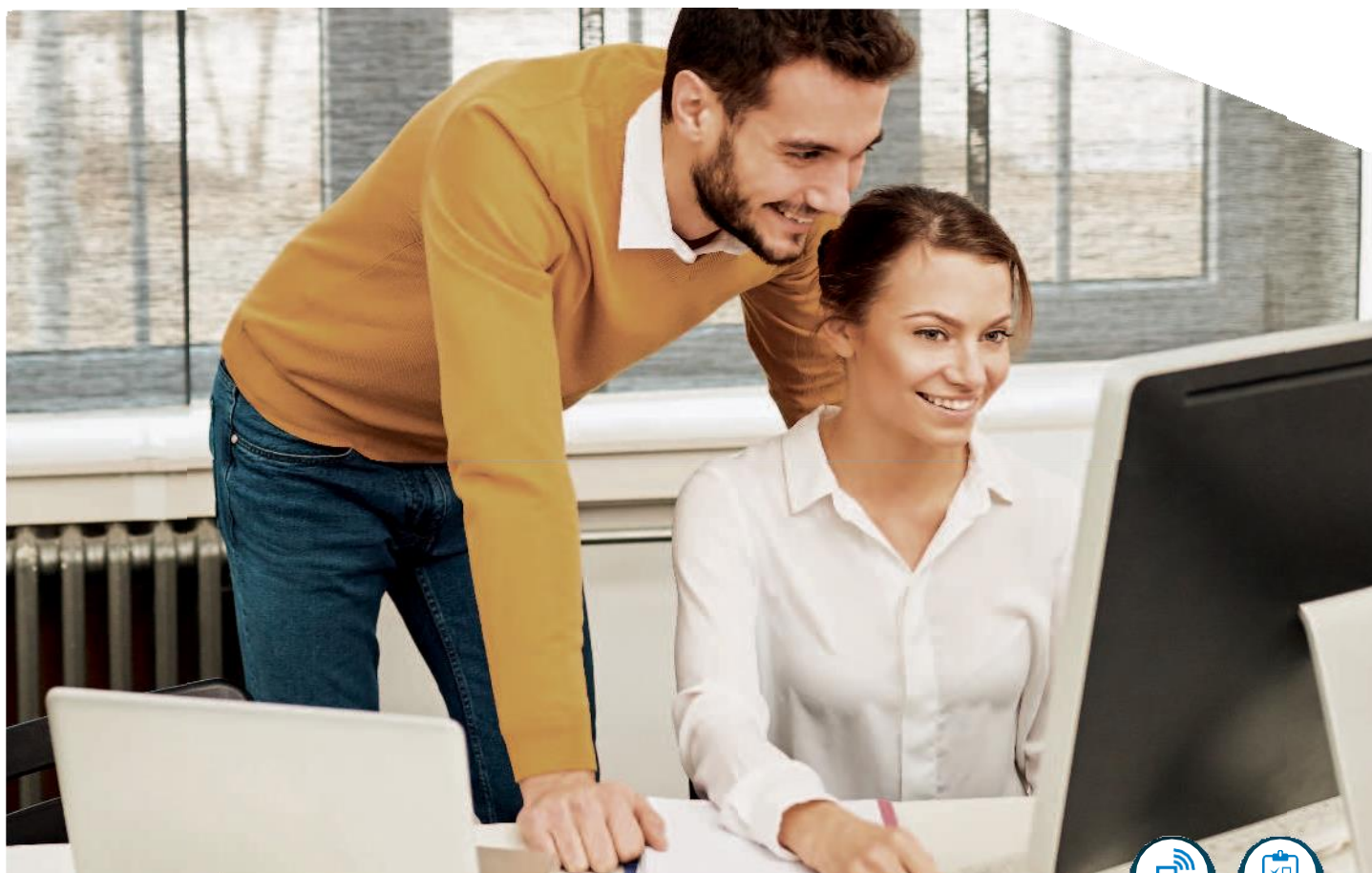




KONICA MINOLTA



Mobile
Connectivity



Services

bizhub 4702P

Black & white A4 printer · Up to 47 pages per minute



Giving Shape to Ideas

Customer benefits



Mobile connectivity
Print anytime from anywhere with Konica Minolta's innovative mobile technologies



Services
Efficient printer fleet management, including automatic consumables delivery, pro-active maintenance and remote setup

Options

1 ENHANCED FEATURES

- User Flash UK-P12
- Barcode card UK-P13
- IPDS card UK-P14

2 CONNECTIVITY

- Wireless LAN NC-P05



3 OTHERS

- Air cleaning unit CU-203

4 MEDIA INPUT

- Paper tray PF-P15
- Paper tray PF-P16
- Copier desk SCD-4000e

5 MEDIA OUTPUT

- Convenience stapler EH-C591

LEGEND

- Mandatory option
- Option
- This option can only be installed with the respective option above it

Finishing functionalities



Duplex



Corner stapling (off-line)

Descriptions

bizhub 4702P

Laser printer with 47 ppm b/w. Standard Gigabit Ethernet, 512 MB memory, duplex unit, PCL 5/6, PostScript 3 and XPS support. Paper capacity of 550 sheets and 100-sheet manual bypass. Media from A6 to A4 and 60 – 216 g/m².

ENHANCED FEATURES

UK-P12 User flash	256 MB User flash for storing fonts, forms and macros or to save job account log
UK-P13 Barcode card	Printer-based electronic barcode engine
UK-P14 IPDS card	Provides compatibility for IPDS printing

CONNECTIVITY

NC-P05 Wireless LAN	Wireless LAN to network connector
---------------------	-----------------------------------

OTHERS

CU-203 Air cleaning unit	Improving indoor air quality by reduced emissions
--------------------------	---

MEDIA INPUT

PF-P15 Papertray	A5–A4, 250 sheets, 60–120 g/m ²
PF-P16 Papertray	A5–A4, 550 sheets, 60–120 g/m ²
SCD-4000e Copier desk	Ensures ergonomic height and provides storage space for print media, etc.

MEDIA OUTPUT

EH-C591 Convenience stapler	Convenient stapling of up to 50 prints per set
-----------------------------	--

Technical specifications

SYSTEM SPECIFICATIONS

Panel size/resolution	2.4" / 320 x 240
System memory	512 MB (standard)
Interface	10-Base-T/100-Base-TX/1,000-Base-T Ethernet; USB 2.0; Wi-Fi 802.11b/g/n (optional)
Network protocols	TCP/IP (IPv4 / IPv6); AppleTalk; Bonjour; SMB; LPD; IPP; SNMP; HTTP/S
Printable paper size	A6–A4, customised paper sizes
Printable paper weight	60–216 g/m ²
Paper input capacity	Standard: 650 sheets; Max.: 2,300 sheets
Paper tray input (standard)	550 sheets, A6–A4, 60–120 g/m ²
Paper tray input (optional)	3x 250/550 sheets; A5–A4; 60–120 g/m ²
Manual bypass	100 sheets, A6–A4, custom sizes, 60–216 g/m ²
Automatic duplexing	A4; 60–90 g/m ²
Output capacity	Rec.: 250 sheets
Print volume (monthly)	Rec.: 7,000 pages Max. ¹ : 175,000 pages
Toner lifetime	Up to 25,000 pages
Imaging unit lifetime	Up to 60,000 pages
Power consumption	220–240 V / 50/60 Hz; Less than 670 W
System dimensions (W x D x H)	399 x 374 x 303 mm
System weight	Approx. 16 kg

PRINTER SPECIFICATIONS

Printing process	Electrostatic laser
Print speed A4	Up to 47 ppm
Autoduplex speed A4	Up to 24 ppm
1st print out time	6.5 sec.
Print resolution	1200 x 1200 dpi
Page description language	PCL 5/6; PostScript 3; XPS
Operating systems	Windows 7 (32/64); Windows 8/8.1 (32/64); Windows 10 (32/64); Windows Server 2008 (32/64); Windows Server 2008 R2; Windows Server 2012; Windows Server 2012 R2; Windows Server 2016; Macintosh OS X 10.9 or later; Linux; Citrix
Printer fonts	89 PCL Latin; 158 PostScript 3 Emulation Latin
Print functions	Duplex, n-up, watermark, electronic sorting, USB direct print (PDF v1.7; TIFF; JPEG; GIF; BMP; PNG; XPS; docx; xlsx; pptx)
Mobile Printing	AirPrint (iOS), Mopria (Android), Google CloudPrint, Konica Minolta Mobile Print (iOS, Android & Windows 10 Mobile), Konica Minolta Print Service (Android) optional: Wii Direct

SYSTEM FEATURES

Security	TCP/UDP port disabling; certificate management; SNMPv3; IPSec support; HTTPS; IP filtering and port blocking; IEEE 802.1x support; SMTP authentication; Secure print (print hold/PIN)
Software	PageScope Net Care Device Manager

¹ If the maximum volume is reached within a period of one year, then a maintenance cycle must be performed

- All specifications refer to A4-size paper of 80 gsm quality.
- The support and availability of the listed specifications and functionalities varies depending on operating systems, applications and network protocols as well as network and system configurations.
- The stated life expectancy of each consumable is based on specific operating conditions such as page coverage for a particular page size (5% coverage of A4). The actual life of each consumable will vary depending on use and other printing variables including page coverage, page size, media type, continuous or intermittent printing, ambient temperature and humidity.
- Some of the product illustrations contain optional accessories.
- Specifications and accessories are based on the information available at the time of printing and are subject to change without notice.
- Konica Minolta does not warrant that any specifications mentioned will be error-free.
- All brand and product names may be registered trademarks or trademarks of their respective holders and are hereby acknowledged.

Telecopy Sp. z o.o.
Wrocław
tel. 71 7957717
tel. 71 7957718

